

# National Housing Construction Index

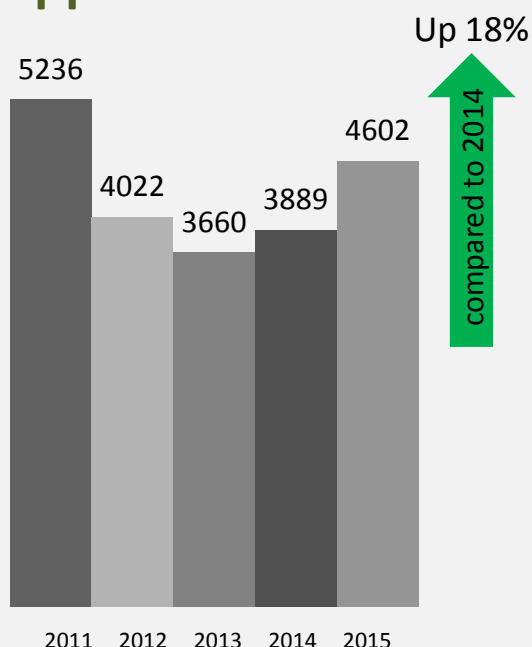


Volume 20 January – April 2015

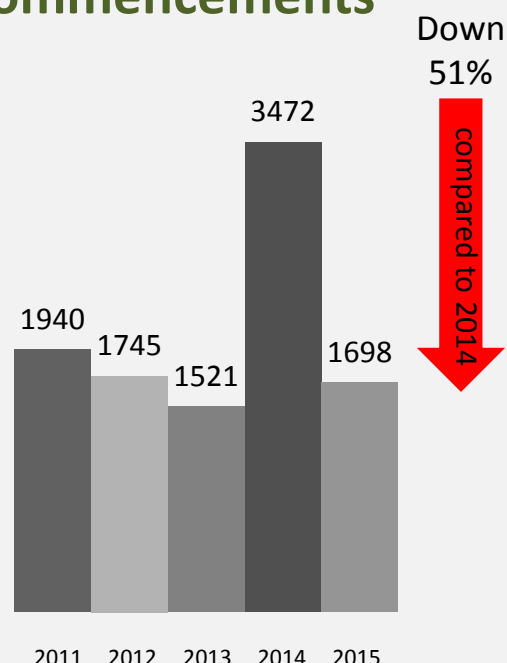
The **National Housing Construction Index** has been compiled from data gathered and posted on the [www.link2plans.com](http://www.link2plans.com) website. Link2Plans analyse and classify all planning applications and commencement notices as provided by local authorities. The National Construction Housing Index will be produced by the team of researchers in [www.link2plans.com](http://www.link2plans.com) on a bi-monthly basis.

The **National Housing Construction Index** by Link2Plans indicates current and future housing construction activity on national, regional and local level. Two key sets of data are used. The first, planning applications are a measure of sentiment and a measure of potential future activity. The second, commencement notices are a real time barometer of actual housing construction activity.

## Applications



## Commencements



**Key Findings:** Applications are up 18% nationally when compared to to the same period 2014. Applications are up 9% with 22 counties showing an increase over last year. Projects in Dublin are slightly down by -1%.














**Commencements:** Commencements are down -51% when compared to 2014. This is a reflection of the surge of commencements lodged in the first quarter of 2014. Commencements are up when compared to the same period in 2013.

# National Housing Construction Index



Volume 20 January – April 2015

## Applications by county

	Jan-Apr 2011	Jan-Apr 2012	Jan-Apr 2013	Jan-Apr 2014	Jan-Apr 2015	2014 vs 2015		
						Change	%	
Limerick	218	164	118	127	123	-4	-3%	
Dublin	936	758	864	1256	1240	-16	-1%	
Mayo	175	118	98	93	99	6	6%	
Wexford	194	162	124	150	165	15	10%	
Kildare	202	119	149	153	172	19	12%	
Tipperary	197	143	135	128	144	16	13%	
Carlow	68	58	55	41	47	6	15%	
Waterford	124	79	68	84	102	18	21%	
Galway	345	238	180	192	236	44	23%	
Roscommon	68	49	55	54	67	13	24%	
Donegal	342	307	207	178	223	45	25%	
Offaly	73	50	34	39	49	10	26%	
Westmeath	86	71	50	59	76	17	29%	
Cork	786	672	615	487	628	141	29%	
Monaghan	88	62	67	55	71	16	29%	
Wicklow	173	148	132	153	203	50	33%	
Longford	29	26	29	21	29	8	38%	
Clare	177	118	88	92	131	39	42%	
Kilkenny	120	73	76	76	109	33	43%	
Meath	225	167	129	145	215	70	48%	
Kerry	207	113	101	94	142	48	51%	
Sligo	95	76	62	41	62	21	51%	
Cavan	67	46	50	46	70	24	52%	
Laois	72	67	46	35	54	19	54%	
Louth	142	111	99	76	122	46	61%	
Leitrim	27	27	29	14	23	9	64%	
<b>Grand Total</b>	<b>5236</b>	<b>4022</b>	<b>3660</b>	<b>3889</b>	<b>4602</b>	<b>713</b>	<b>18%</b>	

# National Housing Construction Index



Volume 20 January – April 2015

## Commencements by county

	Jan-Apr 2011	Jan-Apr 2012	Jan-Apr 2013	Jan-Apr 2014	Jan-Apr 2015	2014 vs 2015	
						Change	%
Donegal	115	79	69	239	58	-181	-76%
Clare	88	72	52	149	41	-108	-72%
Westmeath	15	36	8	52	15	-37	-71%
Roscommon	30	23	34	55	16	-39	-71%
Tipperary	83	62	47	144	43	-101	-70%
Monaghan	32	20	20	72	22	-50	-69%
Mayo	38	50	55	159	53	-106	-67%
Leitrim	18	20	14	24	9	-15	-63%
Sligo	43	44	23	78	31	-47	-60%
Limerick	98	95	48	127	53	-74	-58%
Louth	51	48	49	86	36	-50	-58%
Laois	39	29	24	57	24	-33	-58%
Wexford	79	62	62	132	57	-75	-57%
Cork	195	179	136	466	204	-262	-56%
Galway	165	120	98	243	108	-135	-56%
Longford	9	14	9	22	10	-12	-55%
Offaly	31	33	25	59	28	-31	-53%
Kildare	72	64	56	118	59	-59	-50%
Meath	77	70	61	177	91	-86	-49%
Kerry	94	80	66	94	56	-38	-40%
Kilkenny	62	57	36	72	45	-27	-38%
Wicklow	49	49	73	113	71	-42	-37%
Carlow	22	22	17	39	25	-14	-36%
Cavan	43	48	31	47	31	-16	-34%
Dublin	348	319	379	592	463	-129	-22%
Waterford	44	50	29	56	49	-7	-13%
<b>Grand Total</b>	<b>1940</b>	<b>1745</b>	<b>1521</b>	<b>3472</b>	<b>1698</b>	<b>-1774</b>	<b>-51%</b>

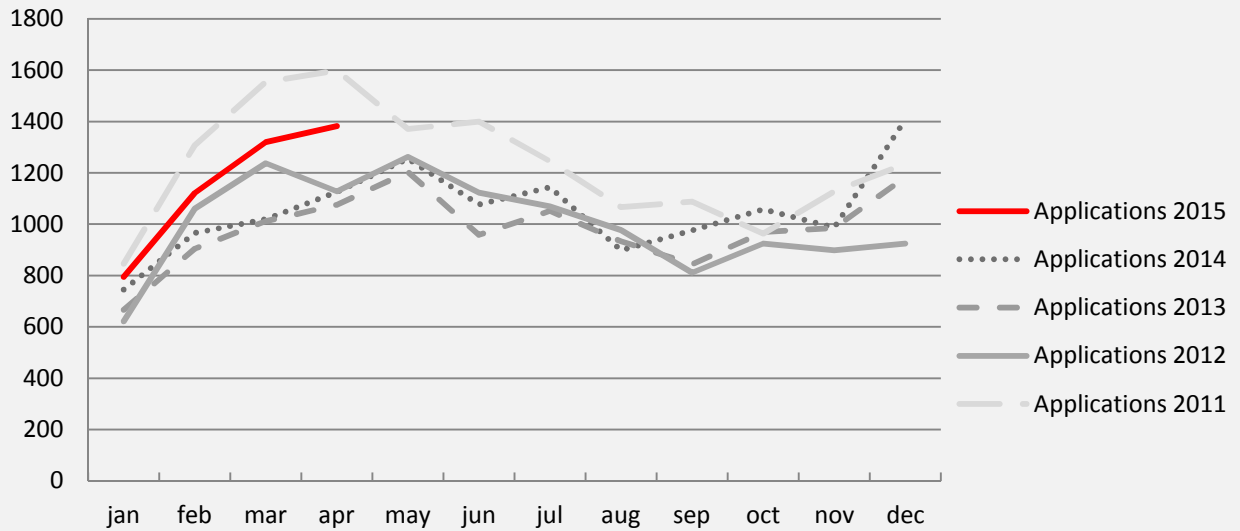


# National Housing Construction Index

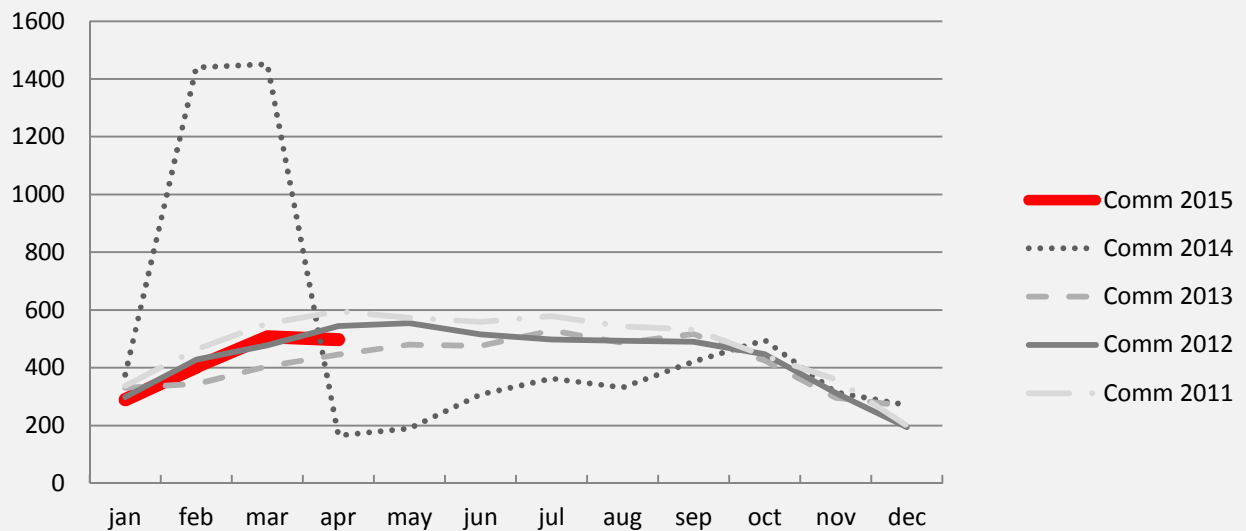


Volume 20 January – April 2015

## Applications



## Commencements



# National Housing Construction Index



Volume 20 January – April 2015

## Methodology:

The sources of data for the Index are planning applications and commencement notices as provided by local authorities under the planning and development act 2000 and the building control (amended) regulations, 2013. It should be noted that under Planning and Development act 2000 some categories of building are exempted from planning permission for example, some extensions under 40sq mts, are not included in the index. Non "construction activity" related applications such as fire certificates, retentions, extension of duration etc..... have been excluded from the index. This index focuses on "housing based" construction activity only i.e. house construction, house extensions and residential developments.

## Disclaimer – Link2Plans

The **National Housing Construction Index** is prepared from information that is provided by local authorities under planning and building control regulations. We believe that the index is collated with care from data available at the time of publishing, but we do not make any statement as to its accuracy or completeness. We reserve the right to vary our methodology and to edit or discontinue the indices, or analysis at any time. Persons seeking to place reliance on any information contained in this index for their own or third party commercial purposes do so at their own risk.



**ABOUT THE AUTHOR:** Danny O'Shea is Managing Director & Co-Founder of Link2Plans. Established in 2010 Link2Plans is the portal for every current planning application, approval and commencement in the country. Previously Danny was Managing Director at Riverside Manufacturing (Ireland). Danny holds a Diploma in Computing (1986) and an MBA from DKIT (2006) and has been involved in systems development, management, innovation and online development for the past 25 years.